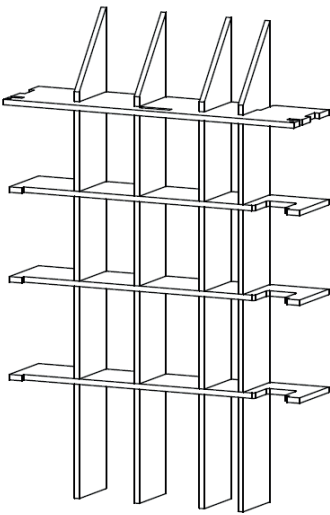
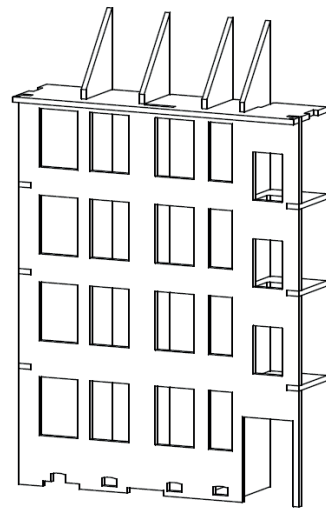


Montage Kulissenhäuser mit 3 und 4 Stockwerken

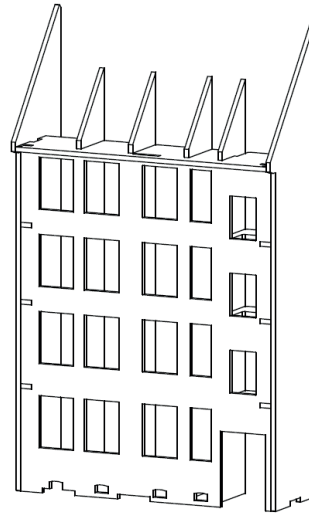
1. Grundgerüst



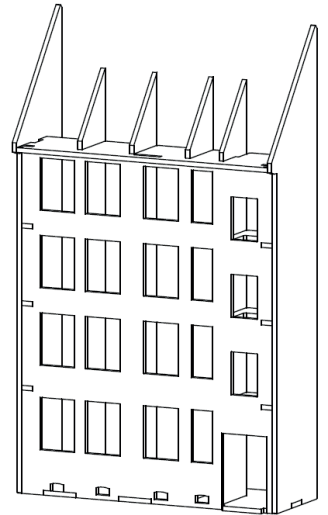
2. Hauswand Innenteil



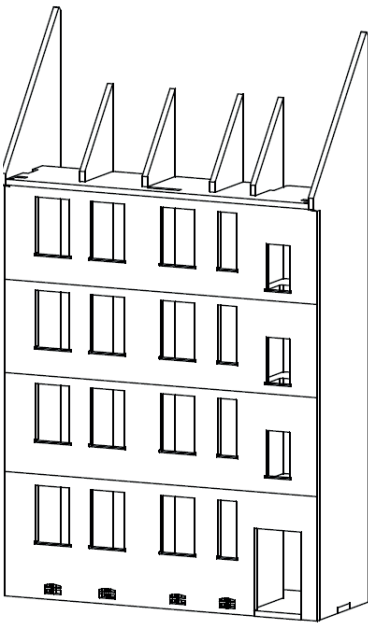
3. Seitenwände



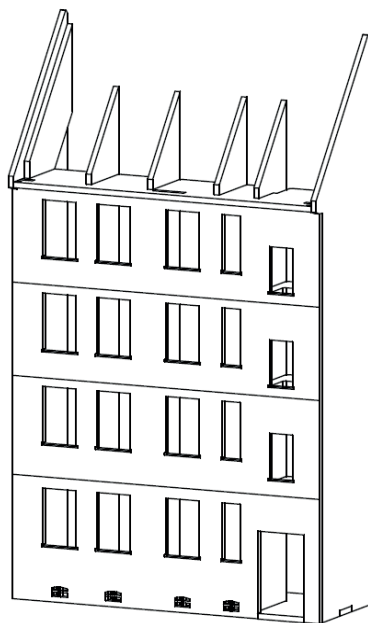
4. Bodenplatte



5. Hauswandausenteil



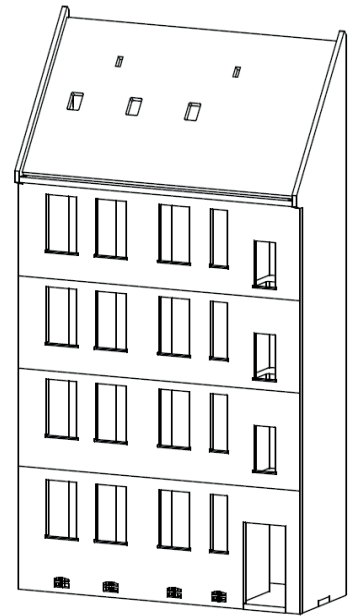
6. Dachaufleger



7. Detail - Winkelplatte



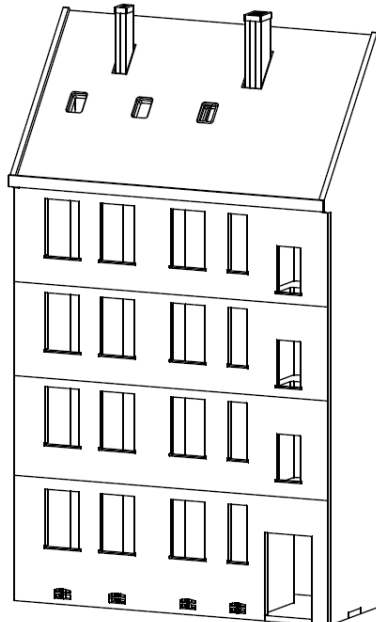
8. Dachplatte



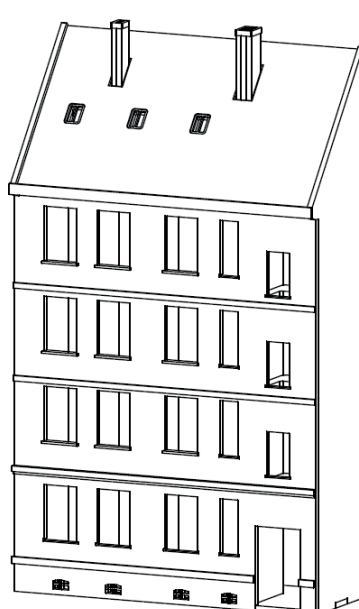
9. Dachziegel



10. Schornsteine



11. Zierleisten



12. Fenster und Türen

